

REGION 2 - Lower Mainland

CONTACT INFORMATION

Fish and Wildlife Regional Office

(604) 586-4400
200-10428 153 St
Surrey BC V3R 1E1

Conservation Officer Service

Please call 1-877-952-7277 for recorded information or to make an appointment at any of the following Field Offices: Mission, Powell River, Sechelt, and Squamish

RAPP

Report All Poachers and Polluters
Conservation Officer 24 Hour Hotline
1-877-952-RAPP (7277) or rapp.bc.ca

Please refer to [page 78](#) for more information

Salmon Information:

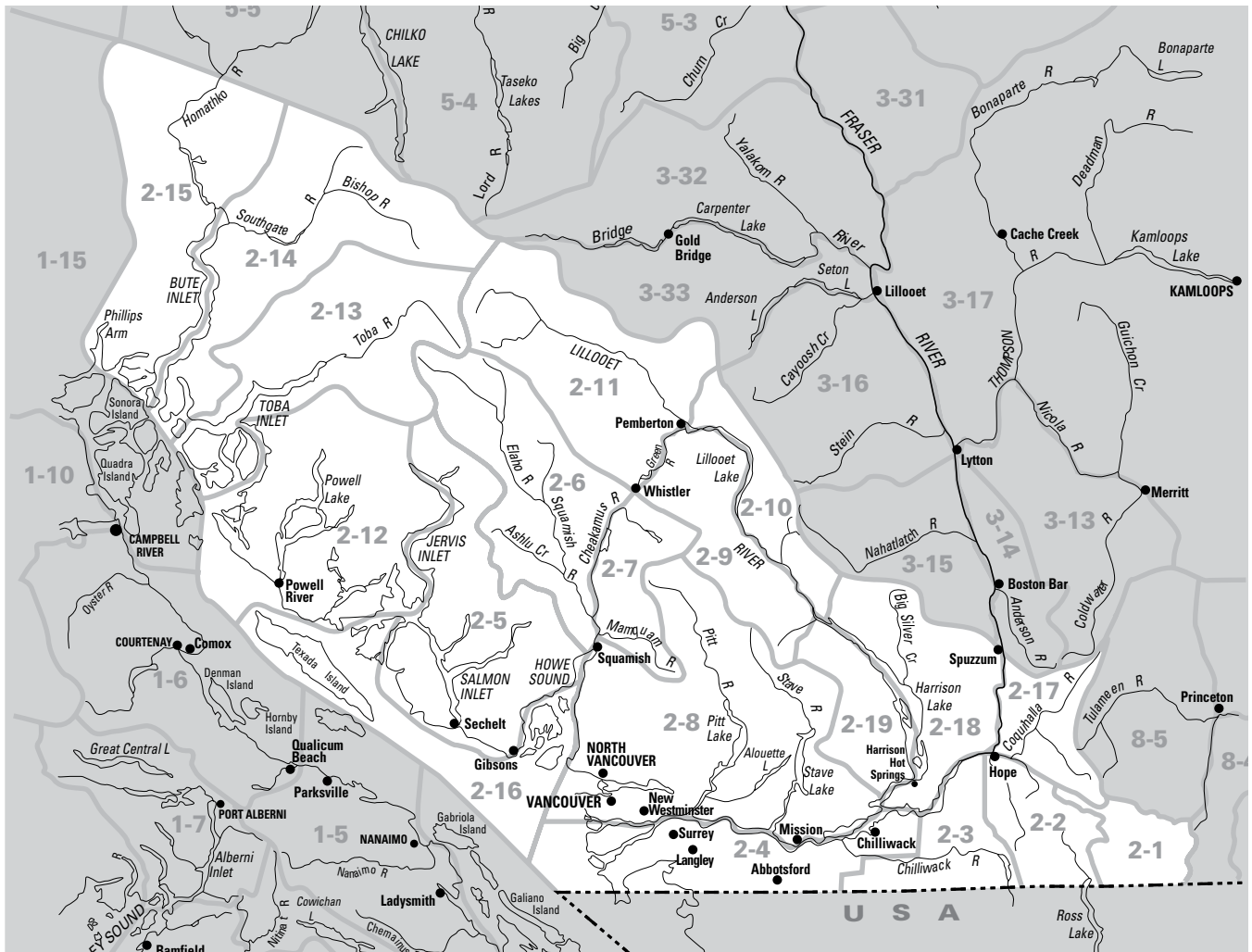
Fisheries and Oceans Canada District Offices (DFO)

Chilliwack:	(604) 824-3300
Delta:	(604) 666-8266
Langley:	(604) 607-4150
Squamish:	(604) 892-3230
Steveston:	(604) 664-9250
Vancouver:	(604) 666-0384



STAY UP TO DATE:

Check website for in-season changes or closure dates for the 2025-2027 season at: www.gov.bc.ca/FishingRegulations



The Management Unit boundaries on the map above are approximate and for reference to locate waterbodies and regional boundaries. For detailed maps visit gov.bc.ca/WildlifeManagementUnits.

Regional Regulations

General Regulations

No Fishing: in any lake in the UBC Malcolm Knapp Research Forest near Maple Ridge.

Single barbless hook: must be used in all streams of Region 2, all year. See definition of “angling” and “streams” on page 80.

Dead fin fish as bait: only permitted in Region 2 when sport fishing for sturgeon in the Fraser River, Lower Pitt River (CPR Bridge upstream to Pitt Lake), Lower Harrison River (Fraser River upstream to Harrison Lake). See page 8 for details.

Steelhead fishing in the Lower Mainland

Region: Your basic licence must be validated with a Conservation Surcharge Stamp if you fish for **steelhead** anywhere in B.C. See page 6 for details.

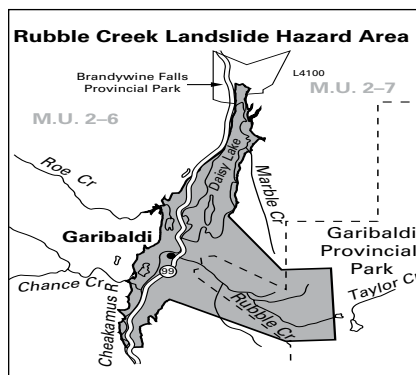
When you have caught and retained your daily quota of hatchery steelhead from any water, you must stop fishing that water for the remainder of that day.

Protected Species: it is illegal to fish for or catch and then keep protected species. In Region 2, these include:

- Nooksack dace
- Salish sucker
- Green sturgeon
- Cultus Lake sculpin

See page 9 for details.

NOTICE TO ANGLERS The area known as the Rubble Creek Landslide Hazard Area is a high risk slide area. People who fish in this area do so at THEIR OWN RISK.



Region 2 Daily Quotas

(See tables for exceptions)

- Trout/char:** 4, but not more than
- 1 over 50 cm (2 hatchery steelhead over 50 cm allowed)
 - 2 from streams (must be hatchery)
 - 1 char (bull trout, Dolly Varden, or lake trout), none under 60 cm

And you must release:

- Wild trout/char from streams
- All wild steelhead
- Hatchery trout/char under 30 cm from streams

NOTE: There is no general minimum size limit for trout in lakes

Bass: 20 (excluding Mill Lake - see page 24 for quota)

Crappie: 20

Crayfish: 25

Kokanee: 5 (none from streams)

Whitefish: 15 (all species combined)

White Sturgeon: CATCH AND RELEASE ONLY

- Fraser River: CLOSED TO ALL FISHING in the Fraser areas of Jespersen’s Side Channel, Herrling Island Side Channel and Seabird Island north Side Channel, May 15-July 31 (to view a map of this area see page 26).

Possession Quotas

Possession quotas = 2 daily quotas

Annual Quotas

Annual catch quota for all B.C.: 10 steelhead per licence year (only hatchery steelhead may be retained in B.C.)

Daily & Annual Quotas for Salmon

Please refer to the NOTICE on page 77 for Salmon Regulations.

Stave River Steelhead Marking

Maxillary (jaw) clipping is being used to assess hatchery release strategies. Refer to page 76 for instructions on what to do if you catch a maxillary clipped fish.

⚠️ INVASIVE SPECIES ALERT

Atlantic Salmon

Please refer to the salmon section, page 78



Tidal Boundaries on Rivers in Region 2

NOTE: Provincial freshwater regulations apply upstream of these boundaries and Federal tidal regulations apply downstream of these boundaries:

Brunette R.: Burlington Northern Railway Bridge

Campbell R.: Burlington Northern Railway Bridge

Capilano R.: CN Railway Bridge

Coquitlam R.: Mary Hill Bypass Bridge

Fraser R.: CPR Bridge at Mission

Kanaka Cr.: CPR Bridge

Nathan Cr.: CN Railway Bridge

Nicomel R.: Burlington Northern Railway Bridge

Pitt R.: CPR Bridge

Serpentine R.: Burlington Northern Railway Bridge

Seymour R.: CN Railway Bridge

Squamish R.: a line running true west from the tip of the Squamish Dyke (“Windsurfer Spit”)

Stave R.: CPR Bridge

West Cr.: CN Railway Bridge

Whonnock Cr.: CP rail line

York Cr.: CP rail line

NOTE From one hour after sunset to one hour before sunrise fishing is prohibited on portions of the Fraser, Harrison, and Pitt Rivers (see Water-specific Tables for details). To find out the time of sunrise and sunset consult a local newspaper or the National Research Council of Canada website at <https://nrc.canada.ca/en/> for a sunrise-sunset calculator.

Water-Specific Regulations

WATER BODY MGMT UNIT		EXCEPTIONS TO THE REGIONAL REGULATIONS
ALICE LAKE	➔ 2-7	No powered boats
ALOUETTE LAKE	2-8	Bull trout (char) catch and release No vessels in swimming areas, as buoyed and signed; speed restriction (8 km/h) at south end of lake, south of a line drawn from the BC Parks boat ramp to signs on the east side of the lake
ALOUETTE RIVER	* 2-8	No Fishing upstream of the fishing boundary signs located at 49° 14.790'N and 122° 32.080'W, near the southern boundary (chain-link fence) of the Alouette River Management Society No Fishing upstream of 216 th Street (including North Alouette River*), May 1-June 30; no powered boats on mainstem
ALPHA LAKE	➔ 2-9	Electric motor only - max 7.5 kW
ALTA LAKE	➔ 2-9	No Fishing Dec 1-Mar 31 Trout/char daily quota combined = 2, no trout over 40cm, no more than 1 char (none under 60 cm) Kokanee catch and release, bait ban, single barbless hook; speed restriction (12 km/h)
ANDERSON CREEK	* 2-4	No Fishing
ANGUS CREEK	2-5	No Fishing
ASHLU CREEK	2-6	Bait ban
BEAR (Mahood) CREEK	* 2-4	No Fishing upstream of 152 nd Street (Johnson Road)
BEAR LAKE	2-18	No powered boats
BIG SILVER CREEK	2-18	No Fishing May 1-June 30
BIRKENHEAD LAKE	2-11	Bull trout (char) catch and release
BIRKENHEAD RIVER	* 2-11	Bait ban
BREM RIVER	* 2-13	No Fishing from the upstream edge of 1st falls (situated approximately 1.5 km from the river's mouth) to a point 100 m downstream No Fishing upstream of 2nd set of falls (situated approximately 2.5 km upstream of Hillis Creek confluence) Nov 1-June 30 Artificial fly only upstream of 2 nd set of falls (situated approximately 2.5 km upstream of Hillis Creek confluence) Bait ban
BROTHERS CREEK	* 2-8	No Fishing
BROWNING LAKE	➔ 2-8	No powered boats
BRUNETTE RIVER	2-8	No Fishing upstream of Burnaby Lake or from Cariboo Dam to Salamander Creek; steelhead catch and release
BRUNETTE RIVER'S TRIBUTARIES	2-8	No Fishing
BURNABY LAKE	2-8	Single barbless hook; No powered boats
BURNABY LAKE'S TRIBUTARIES	2-8	No Fishing
CAMPBELL RIVER	* 2-4	No Fishing upstream of 12 th Avenue No Fishing downstream of 12 th Avenue Apr 1-June 30 No Fishing between two white triangular fishing boundary signs downstream to pedestrian bridge at the foot of Stayte Road, Aug 15-Sept 30 No Fishing from 21:00 hours to 05:00 hours each day, Aug 1-Dec 31
CAP SHEAF LAKES	2-16	Single barbless hook
CAPILANO RIVER	* 2-8	No Fishing upstream of fishing boundary signs at footbridge situated approximately 100 m downstream of the fish fence Bait ban, Aug 1-Oct 31; steelhead catch and release
CASE LAKE	2-16	Single barbless hook
CEDAR LAKE	2-2	See Sumallo River
CHAPMAN CREEK	2-5	No Fishing May 1-June 30 No Fishing from the falls to 100 m downstream (falls are located approximately 550 m upstream of the power line crossing)
CHEAKAMUS RIVER	2-7	Bait ban
CHEAM LAKE	2-3	No Fishing
CHEEKYE RIVER	* 2-7	No Fishing (including Brohm Creek)
CHEHALIS LAKE	2-19	No wild trout over 50 cm, 1 bull trout over 60 cm
CHEHALIS LAKE'S TRIBUTARIES	2-19	No Fishing
CHEHALIS RIVER	* 2-19	No Fishing from boundary signs at outlet of Chehalis Lake to main logging road bridge approximately 2.4 km downstream of Chehalis Lake No Fishing downstream of the main logging road bridge situated approximately 2.4 km downstream of Chehalis Lake, May 1-31
CHILLIWACK LAKE	2-4	No wild trout over 50 cm, 1 bull trout over 60 cm No Fishing upstream from a line between two fishing boundary signs on either side of the Chilliwack River 100 m downstream of the confluence of the Chilliwack River and Slesse Creek No Fishing downstream of a line between two fishing boundary signs on either side of the Chilliwack River 100m downstream of the confluence of the Chilliwack River and Slesse Creek to Tamihi Rapids Bridge, Apr 1-June 30 No Fishing downstream of Tamihi Rapids Bridge to Vedder Crossing Bridge, May 1-June 30 Downstream of Vedder Crossing Bridge: (a) fly fishing only, bait ban, hatchery rainbow trout catch and release (50 cm or less), and hatchery cutthroat catch and release, May 1-31; (b) No Fishing June 1-30; (c) hatchery rainbow trout of any length 50 cm or less: daily quota = 4, July 1-Apr 30
CHILLIWACK / VEDDER RIVERS (does not include Sumas River) (see map on page 24)	* 2-4	
CHILQUA SLOUGH	2-8	Speed restriction (8 km/h)
COGBURN CREEK	* 2-18	No Fishing May 1-June 30
COLVIN CREEK	2-5	No Fishing
COQUIHALLA RIVER	* 2-17	No Fishing upstream of the northern entrance to the upper most railway tunnel, Nov 1-June 30 (see map on page 24) Fly fishing only; bait ban upstream of the northern entrance to the upper most railway tunnel, Jul 1-Oct 31 No Fishing downstream of the southern entrance to the lower most railway tunnel, Apr 1-Oct 31 No Fishing at Othello Tunnels from the northern entrance to the upper most railway tunnel to the southern entrance of the lower most tunnel; approximately 700 m length Trout/char (including steelhead) catch and release, bait ban, downstream of the southern entrance to the lower most railway tunnel, Nov 1-Mar 31

TABLE LEGEND:

* Includes tributaries

➔ Stocked Lake, see page 4

♿ Wheelchair Accessible

♿ Youth/Disabled Accompanied Water

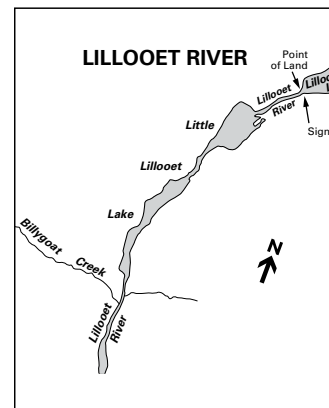
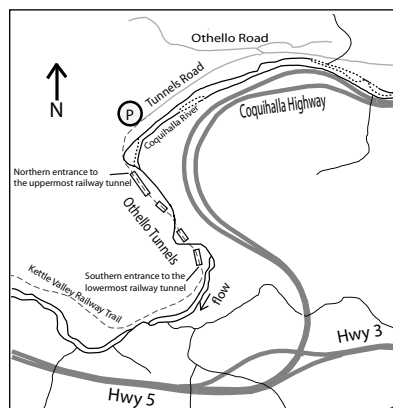
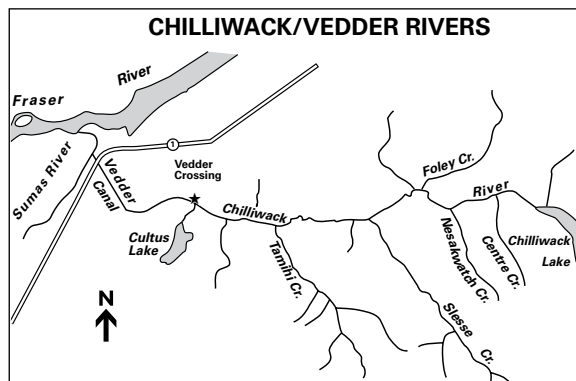
Water-Specific Regulations

WATER BODY MGMT UNIT		EXCEPTIONS TO THE REGIONAL REGULATIONS
COQUITLAM RIVER	2-8	No Fishing upstream of Mary Hill Bypass Bridge, May 1-June 30; No powered boats on parts Hatchery trout daily quota = 2 (20-30 cm only), from Lougheed Highway Bridge to Mary Hill Bypass Bridge, July 1-Oct 15
COMO (Welcome) LAKE	➔ 2-8	Trout/char daily quota = 2; single barbless hook
CORBOLD CREEK	2-8	Bait ban
COUGAR CANYON CREEK	2-4	No Fishing
CRANBERRY LAKE	2-12	Single barbless hook; No powered boats
CULTUS LAKE	2-3	No wild trout over 50 cm, 1 bull trout over 60 cm; no vessels on parts; speed restriction (5 km/h) at north end, as buoyed and signed Kokanee catch and release
DAVIS LAKE	2-8	No powered boats
DEER LAKE (Burnaby)	➔ 2-8	Trout/char daily quota = 2; single barbless hook; no powered boats
DEER LAKE (Sasquatch Park)	➔ 2-18	Electric motor only - max 7.5 kW
DODD LAKE	2-12	Wild trout/char daily quota = 2 (no wild trout over 40 cm); single barbless hook
EAGLE CREEK	* 2-8	No Fishing
ELAHO RIVER	2-6	Bait ban
ELGIN CREEK	* 2-4	No Fishing
EMILY ("TURTLE") LAKE	2-16	Single barbless hook
"ERROCK" ("Squakum") LAKE	2-8	Engine power restriction - 7.5 kW (10 hp); official name: Lake Errock
FERGUS CREEK	* 2-4	No Fishing
FLORENCE LAKE	2-8	Trout/char catch and release; bait ban, single barbless hook
FOLEY LAKE	2-3	Electric motor only - max 7.5 kW
FRANCIS LAKE	➔ 2-19	No powered boats Dead fin fish may be used for bait only when fishing for sturgeon (see page 8 in the Provincial Regulations)
FRASER RIVER (upstream of the CPR Bridge at Mission)	2-4	No Fishing in the area bounded by a line commencing at a fishing boundary sign located at the eastern end of Landstrom Bar (Scale Bar) to a fishing boundary sign on the opposite bank of the river, thence to a fishing boundary sign at the southern end of Croft Island, thence to a fishing boundary sign on the nearest bank of the river in a westerly direction, thence following the bank of the river in a westerly direction to the Point of Commencement, May 1-Oct 31 No Fishing in the non-tidal portion of the Fraser River in Region 2 from one hour after sunset to one hour before sunrise No Fishing in the Jespersion's Side Channel, Herring Side Channel, and Seabird Island north Side Channel May 15-July 31. See page 26 for a map of the No Fishing areas No Fishing for steelhead Fraser River Mainstem Aug 15-Dec 31 Boats less than 20 m in length, under power or anchored, must not impede the passage of commercial vessels
FROSST CREEK	2-3	No Fishing Oct 15-Apr 15
GARDEN BAY LAKE	2-5	Single barbless hook; Electric motor only - max 7.5 kW
GOAT LAKE	* 2-12	No Fishing Nov 1-Mar 31
GRACE LAKE	➔ 2-19	No powered boats No Fishing Dec 1-Mar 31
GREEN LAKE	2-9	Kokanee, trout and char catch and release; bait ban, single barbless hook; speed restriction on parts (10 km/h) and no towing on parts
GREEN TIMBERS LAKE	➔ 2-4	Trout/char daily quota = 2
HARRISON LAKE	2-18	No wild trout over 50 cm, 1 bull trout over 60 cm; speed restriction (10 km/h) at south end, as buoyed and signed No Fishing from one hour after sunset to one hour before sunrise, tributaries not included
HARRISON RIVER (from the Fraser River upstream to Harrison Lake)	2-18	Dead fin fish may be used for bait only when fishing for sturgeon (see page 8 in the Provincial Regulations) Speed restriction or no powered boats in small bays along the river as signed
HASLAM LAKE	2-12	Electric motor only - max 7.5 kW
HASTINGS CREEK	* 2-8	No Fishing
HATZIC LAKE AND SLOUGH	* 2-8	No Fishing for Sturgeon in Hatzic Lake; speed restriction on parts (8 and 50 km/h)
HICKS LAKE	➔ 2-18	Engine power restriction - 7.5 kW (10 hp)
HOPE SLOUGH	2-8	Electric motor only - max 7.5 kW
HORSESHOE LAKE	2-12	Wild trout/char daily quota = 2 (no wild trout over 40 cm); single barbless hook
HOTEL LAKE	➔ 2-5	Electric motor only - max 7.5 kW
HYDE CREEK	2-8	No Fishing
HYLAND CREEK	* 2-4	No Fishing upstream of 152 nd Street (Johnson Road)
INDIAN RIVER	2-8	Bait ban, Dec 1-Sept 30
INLAND LAKE	* 2-12	No Fishing Nov 1-Mar 31*; single barbless hook, Apr 1-Oct 31 No cutthroat trout 40 cm or more; engine power restriction - 7.5 kW (10 hp)
IRELAND LAKE	2-12	Wild trout/char daily quota = 2 (no wild trout over 40 cm); single barbless hook
IVEY (Horseshoe) LAKE	➔ * 2-11	No Fishing Dec 1-Mar 31; trout/char catch and release, bait ban, single barbless hook
JERRY SULINA PARK POND	2-8	Single barbless hook
"JONES" LAKE	2-3	See Wahleach Lake
KANAKA CREEK	2-8	No Fishing May 1-June 30 No Fishing from Cliff Park Falls to 112 th Avenue
KAWKAWA LAKE	2-17	No Fishing Dec 1-Feb 28 Kokanee daily quota = 4
KHARTOUM LAKE	2-12	Wild trout/char daily quota = 2 (no wild trout 40 cm or more), hatchery rainbow trout (see diagram on page 13) = 6; single barbless hook Rainbow trout/hatchery steelhead quota = 6 in the aggregate
KLEIN LAKE	2-5	Electric motor only - max 7.5 kW ; ♿ wheelchair accessible

Water-Specific Regulations

WATER BODY MGMT UNIT	EXCEPTIONS TO THE REGIONAL REGULATIONS
KOKOMO LAKE	2-5 Electric motor only - max 7.5 kW
LAFARGE (Pinetree Gravel Pit) LAKE ➔	2-8 Trout/char daily quota = 2; single barbless hook
LEVETTE LAKE	2-6 Electric motor only - max 7.5 kW
LIGHTNING LAKE (Manning Park)	2-1 No powered boats
LILLOOET LAKE	2-10 No wild trout over 50 cm, 1 bull trout over 60 cm
LILLOOET LAKE, LILLOOET RIVER *	2-9 Because regional quotas and gear restrictions are different in lakes and streams, please note: the channel between Lillooet Lake and Little Lillooet Lake is part of the Lillooet River. This channel starts at the southern end of Lillooet Lake where it is defined by the point of land on the west side and by a sign immediately across the channel and next to the main logging road on the east. Little Lillooet Lake's lower boundary is approximately 1 km upstream of Billygoat Creek (see map below and Little Lillooet Lake's entry below)
LILY ("Paq") LAKE	2-5 Trout/char catch and release, bait ban, single barbless hook Electric motor only - max 7.5 kW
LITTLE CAMPBELL RIVER	2-4 See Campbell River
LITTLE LILLOOET LAKE	2-10 Trout/char catch and release; single barbless hook
LITTLE MUDDY CREEK	2-1 No Fishing
LITTLE STAWAMUS CREEK *	2-8 No Fishing
LIUMCHEN CREEK	2-3 No Fishing downstream of the lower falls
LOIS LAKE	2-12 Wild trout/char daily quota = 2 (no wild trout 40 cm or more), hatchery rainbow trout = 6 Rainbow trout/hatchery steelhead quota = 6 in the aggregate Single barbless hook
LONZO ("Marshall") CREEK *	2-4 No Fishing Feb 1-June 15 Trout/char 20-30 cm in length Jun 16-Jan 31 ♿ Youth/Disabled Accompanied Water year round (see page 4)
LOST LAKE (near Whistler) ➔	2-8 Electric motor only - max 7.5 kW
LUCILLE LAKE	2-9 Electric motor only - max 7.5 kW
LYNN CREEK	2-8 No Fishing between fishing boundary signs situated approximately 200 m upstream of and 150 m downstream of Twin Falls Bridge* Bait ban (mainstem only)
MACLEAN PONDS	2-4 No Fishing
MAMQUAM RIVER	2-7 Bait ban
MARSH POND	2-4 No Fishing
"MARSHALL" CREEK	2-4 See Lonzo Creek
MASHITER CREEK	2-7 No Fishing
MCCARTNEY CREEK *	2-8 No Fishing
MCKAY CREEK *	2-8 No Fishing
MCLENNAN CREEK *	2-8 No Fishing
MIAMI CREEK	2-19 Electric motor only - max 7.5 kW
MIKE LAKE ➔	2-8 No powered boats
MILL LAKE (Abbotsford) ➔	2-4 Trout/char daily quota = 2; bass daily quota = 4; single barbless hook; ♿ wheelchair accessible: paved path to dock with rails
MINNEKHADA MARSH	2-8 No Fishing
MIXAL (Bear) LAKE	2-5 Electric motor only - max 7.5 kW
MORGAN LAKE	2-8 Trout/char catch and release; bait ban, single barbless hook
MORRIS LAKE	2-19 Wild trout/char catch and release; hatchery trout/char daily quota = 2 (none under 30 cm); electric motor only - max 7.5 kW Single barbless hook, bait ban
MORRIS CREEK	2-19 Electric motor only - max 7.5 kW
MOSQUITO CREEK *	2-8 No Fishing
"MOSS POTHOLE" LAKES	2-18 No Fishing ; unnamed pothole lakes all located east of the power line and approximately 2 km east of Hicks Lake, 3 km south of Deer Lake and 1 km southeast of Moss Lake
NANTON LAKE	2-12 Wild trout/char daily quota = 2 (no wild trout over 40 cm); single barbless hook

Coquihalla River



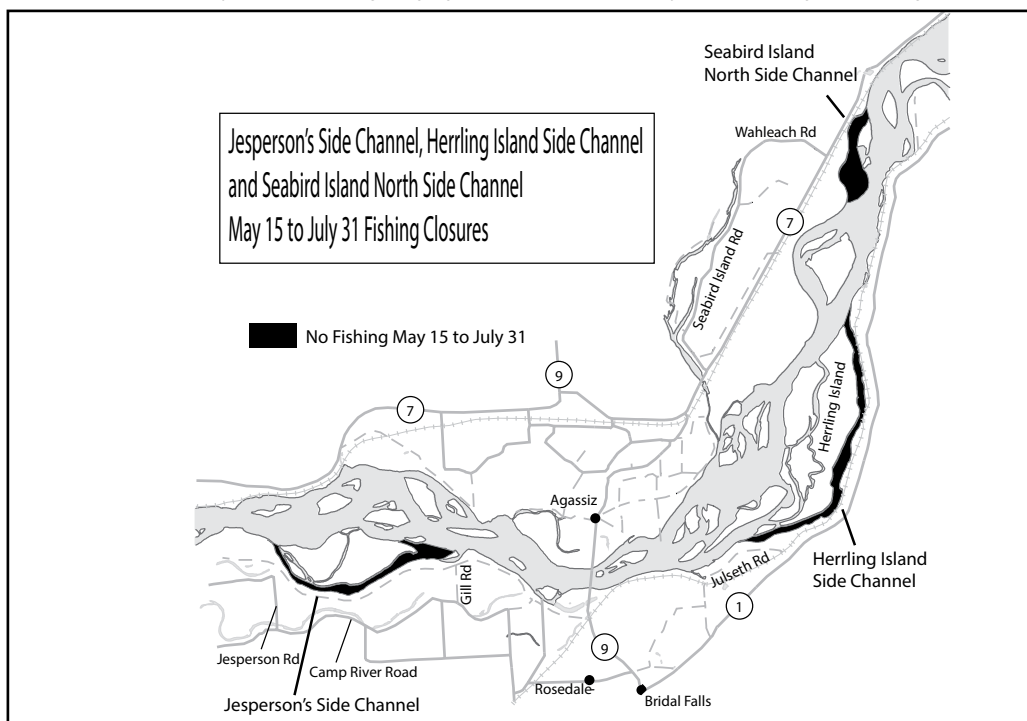
Water-Specific Regulations

WATER BODY MGMT UNIT			EXCEPTIONS TO THE REGIONAL REGULATIONS
NATHAN (Beaver) CREEK	*	2-4	No Fishing upstream of 272 nd Street (Jackman Road) No Fishing downstream of 272 nd Street (Jackman Road), Apr 1-June 30
NELSON CREEK	*	2-8	No Fishing
NICOMEKL RIVER	*	2-4	No Fishing upstream of 208 th Street (Berry Road); No Fishing downstream of 208 th Street, Apr 1-June 30 No Fishing downstream of 208 th Street, from 21:00 hours to 05:00 hours each day, Aug 1-Dec 31 No angling from powered boats upstream of dyke gates, no towing on parts, speed restriction (16 km/h)
NICOMEN SLOUGH		2-8	Speed restriction on parts (8 km/h)
NITA LAKE	➔	2-9	Electric motor only - max 7.5 kW
NOONS CREEK	*	2-8	No Fishing upstream of railway bridge
NORRISH (Suicide) CREEK		2-8	No Fishing May 1-June 30
NORTH ALOUETTE RIVER	*	2-8	No Fishing upstream of 216 th Street (Fifth Ave), May 1-June 30 No powered boats
NORTH LAKE		2-5	Electric motor only - max 7.5 kW
PARTINGTON CREEK		2-8	No Fishing
"PAQ" LAKE		2-5	See Lily Lake
PHELIX CREEK	*	2-11	No Fishing
PITT LAKE		2-8	No wild trout over 50 cm, 1 bull trout over 60 cm Wild trout/char catch and release, single barbless hook north of fishing boundary signs (east and west shores) near the head of the lake
PITT RIVER	*	2-8	No Fishing within Garibaldi Park; speed restriction at Grant Narrows (10 km/h) Bait ban upstream of Pitt Lake No Fishing in the Lower Pitt River (CPR Bridge upstream to Pitt Lake) from one hour after sunset to one hour before sunrise (tributaries not included)
POWELL LAKE	*	2-12	No Fishing Nov 1-Mar 31; no powered boats in One Mile Bay
PRIEST LAKE		2-16	Single barbless hook
RAINY RIVER		2-5	No Fishing May 1-June 30
RICE LAKE (North Vancouver)	➔	2-8	Trout/char daily quota = 2 ♿ wheelchair accessible: excellent path system; see gate attendant for access
RODGERS CREEK	*	2-8	No Fishing
ROLLEY LAKE	➔	2-8	No powered boats
ROSS LAKE (Boundary between Ross Lake and Skagit River is marked by signs)		2-2	No Fishing Nov 1-June 30 Native char catch and release (bull trout and Dolly Varden), trout daily quota = 1 (none under 40 cm), brook trout daily quota = 5 Bait ban; single barbless hook
RUBY CREEK	*	2-5	No Fishing from Ruby Lake to fishing boundary signs approximately 100 m downstream
RUBY LAKE		2-5	No Fishing in the outlet bay within 100 m of the head of Ruby Creek Wild cutthroat trout daily quota = 2 (none 40 cm or more); single barbless hook
SAKINAW LAKE		2-5	No Fishing easterly of a line drawn from a boundary sign located at the north side of the Sakinaw Lake boat launch southwesterly to a boundary sign located at 49° 41.50'N and 123° 58.45'W, Nov 1-Dec 31 No Fishing in "Bear Bay", easterly of a line drawn from a boundary sign located at 49° 40.05'N and 124° 02.13'W due south to a boundary sign on the opposite shore, Nov 1-Dec 31 Kokanee catch and release
SALMON RIVER	*	2-4	No Fishing upstream of 232 nd Street (Livingstone Road) No Fishing downstream of 232 nd Street (Livingstone Road) Apr 1-June 30
SARDIS PARK POND		2-4	Single barbless hook; ♿ Youth/Disabled Accompanied Water year round (see page 4)
SASAMAT LAKE	➔	2-8	No powered boats, May 1-Sept 30; electric motor only - max 7.5 kW, Oct 1-Apr 30
SAYRES (Cedar) LAKE		2-8	Trout/char daily quota = 2; bait ban, single barbless hook Electric motor only - max 7.5 kW
SCHKAM (Lake of the Woods) LAKE	➔	2-18	Electric motor only - max 7.5 kW
SCOTIA CREEK	*	2-11	No Fishing
SCOTT (Hoy) CREEK	*	2-8	No Fishing
SERPENTINE RIVER	*	2-4	No Fishing upstream of 168 th Street at Bothwell Park No Fishing downstream of 168 th Street at Bothwell Park, Apr 1-June 30 No Fishing downstream of 168 th Street at Bothwell Park from 21:00 hours to 05:00 hours each day, Aug 1-Dec 31 No angling from powered boats upstream of dyke gates
SEYMOUR RIVER	*	2-8	No Fishing downstream of Seymour Lake
SHOVELNOSE CREEK	*	2-6	No Fishing
SILVER (Silverhope) LAKE		2-2	No Fishing Dec 1-Apr 30; kokanee, trout and char catch and release, bait ban, single barbless hook
SILVERHOPE (Silver) CREEK	*	2-2	No Fishing upstream of Silver Lake, Nov 1-June 30 Fly fishing only and bait ban upstream of Silver Lake, July 1-Oct 31 No Fishing from Silver Lake down to the Bailey Bridge situated approximately 8 km upstream of Hwy 1 Bait ban downstream of Bailey Bridge situated approximately 8 km upstream of Hwy 1
SKAGIT RIVER (boundary between Skagit River and Ross Lake is marked by signs)	*	2-2	No Fishing Nov 1-June 30 Kokanee, trout and char catch and release; bait ban
SOUTH ALOUETTE RIVER		2-8	See Alouette River
SQUAMISH POWERHOUSE CHANNEL		2-6	Bait ban; Squamish River tributary located upstream of Ashlu Creek

Water-specific Regulations

WATER BODY MGMT UNIT		EXCEPTIONS TO THE REGIONAL REGULATIONS
SQUAMISH RIVER	*	2-6 Bait ban
SQUAMISH RIVER'S TRIBUTARIES		2-6 No Fishing tributaries EXCEPT: Ashlu Creek, Cheakamus, Elaho and Mamquam Rivers, and the Squamish Powerhouse Channel
STATLU CREEK	*	2-19 No Fishing
STAVE RIVER		2-8 No Fishing in the Ruskin spawning channel, from the inlet near the dam downstream to the boat ramp crossing No Fishing in the Northrop Spawning Channel, from the intake downstream to where the channel joins the Stave River main, including its tributaries containing the fishway
STAWAMUS RIVER		2-9 Bait ban, Dec 1-Sept 30
STILL CREEK	*	2-8 No Fishing
STRAWBERRY SLOUGH		2-8 Speed restriction on parts (8 km/h)
SUMALLO RIVER	*	2-2 No Fishing Nov 1-June 30
(includes "Cedar" Lake, at Sunshine Valley)		Bait ban
SWELTZER CREEK	*	2-3 No Fishing
TAILLEFER CREEK		2-11 No Fishing May 1-June 30
TAMIHI CREEK		2-3 No Fishing downstream of the falls situated approximately 200 m upstream of Chilliwack River No Fishing upstream of the falls situated approximately 200 m upstream of Chilliwack River, May 1-June 30
TROUT LAKE (Sasquatch Park)		2-18 No powered boats
TROUT LAKE (Sechelt)	➔	2-5 Electric motor only - max 7.5 kW
TWIN LAKES	*	2-8 No Fishing
VEDDER RIVER		2-4 See Chilliwack River
WAGG CREEK		2-8 No Fishing
WAHLEACH ("Jones") LAKE	➔	2-3 Trout daily quota = 4 (one over 40 cm)
WAHLEACH ("Jones") LAKE'S TRIBUTARIES		2-3 No Fishing
WAUGH (Worm) LAKE		2-5 Electric motor only - max 7.5 kW
WEAVER LAKE and WEAVER CREEK	➔ *	2-19 No Fishing from fishing boundary signs at log booms on Weaver Lake downstream to where Sakwi Creek enters Weaver Creek Engine power restriction on Weaver Lake - 7.5 kW (10 hp)
WEST LAKE		2-16 Speed restriction (12 km/h)
WHONNOCK LAKE	➔	2-8 No powered boats
WIDGEON CREEK		2-8 No powered boats
WIDGEON SLOUGH		2-8 Speed restriction (5 km/h)
WINDSOR LAKE		2-12 Wild trout/char daily quota = 2 (no wild trout over 40 cm); single barbless hook
WOLF LAKE		2-19 No powered boats

NOTE: If a lake or stream is NOT listed here, then only the Provincial Regulations (pages 8-10) and the Regional Regulations (page 21) apply. Regulations that have changed from the previous published version of the synopsis are **no longer** highlighted in colour. Check for any in-season changes at: www.gov.bc.ca/FishingRegulations.



Fraser River Seasonal Sturgeon Closures